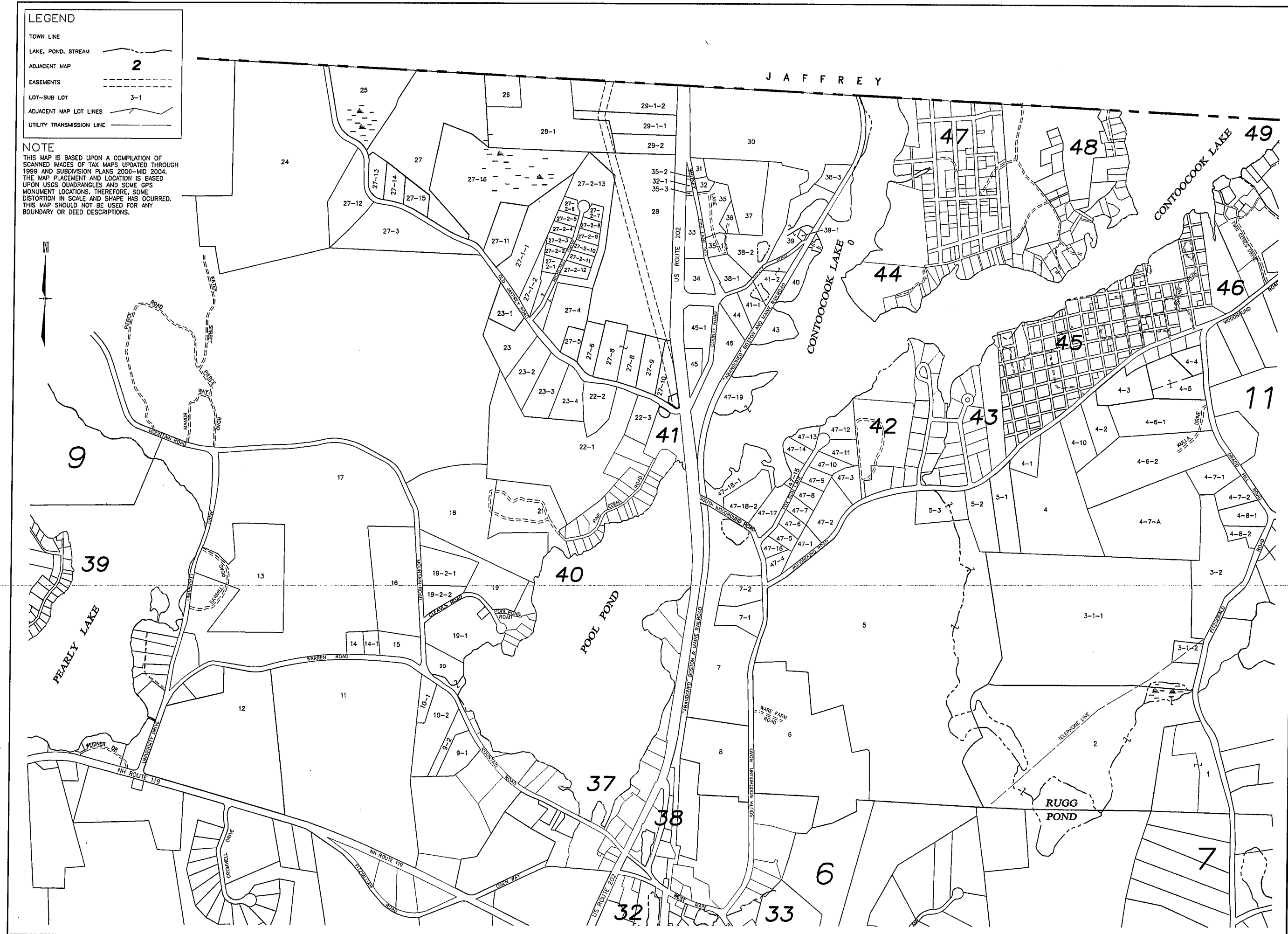


**LEGEND**

TOWN LINE	---
LAKE, POND, STREAM	~~~~~
ADJACENT MAP	<b>2</b>
EASEMENTS	- - - - -
LOT-SUB LOT	3-1
ADJACENT MAP LOT LINES	~~~~~
UTILITY TRANSMISSION LINE	---

**NOTE**

THIS MAP IS BASED UPON A COMPILATION OF SCANNED IMAGES OF TAX MAPS UPDATED THROUGH 1999 AND SUBDIVISION PLANS 2000-MID 2004. THE MAP PLACEMENT AND LOCATION IS BASED UPON USGS QUADRANGLES AND SOME GPS MONUMENT LOCATIONS. THEREFORE, SOME DISTORTION IN SCALE AND SHAPE HAS OCCURRED. THIS MAP SHOULD NOT BE USED FOR ANY BOUNDARY OR DEED DESCRIPTIONS.



48 Constitution Circle  
Bedford, NH 03110  
Phone (603) 472-4488  
Fax (603) 472-9747  
www.firm.com

Civil Engineers  
Professional Engineers  
Professional Land Surveyors  
Professional Landscape Architects

**FIRM**  
Bedford, NH • Manchester, NH • Salem, NH • Portsmouth, NH

**TOWN OF RINDGE  
CHESHIRE COUNTY  
NEW HAMPSHIRE**

DATED: August 2004  
REVISED: April 2005  
June 2005  
CURRENT TO:  
APRIL 1, 2009

SCALE: 1"=500±  
CADD: B2290 base

PROPERTY  
MAP

10