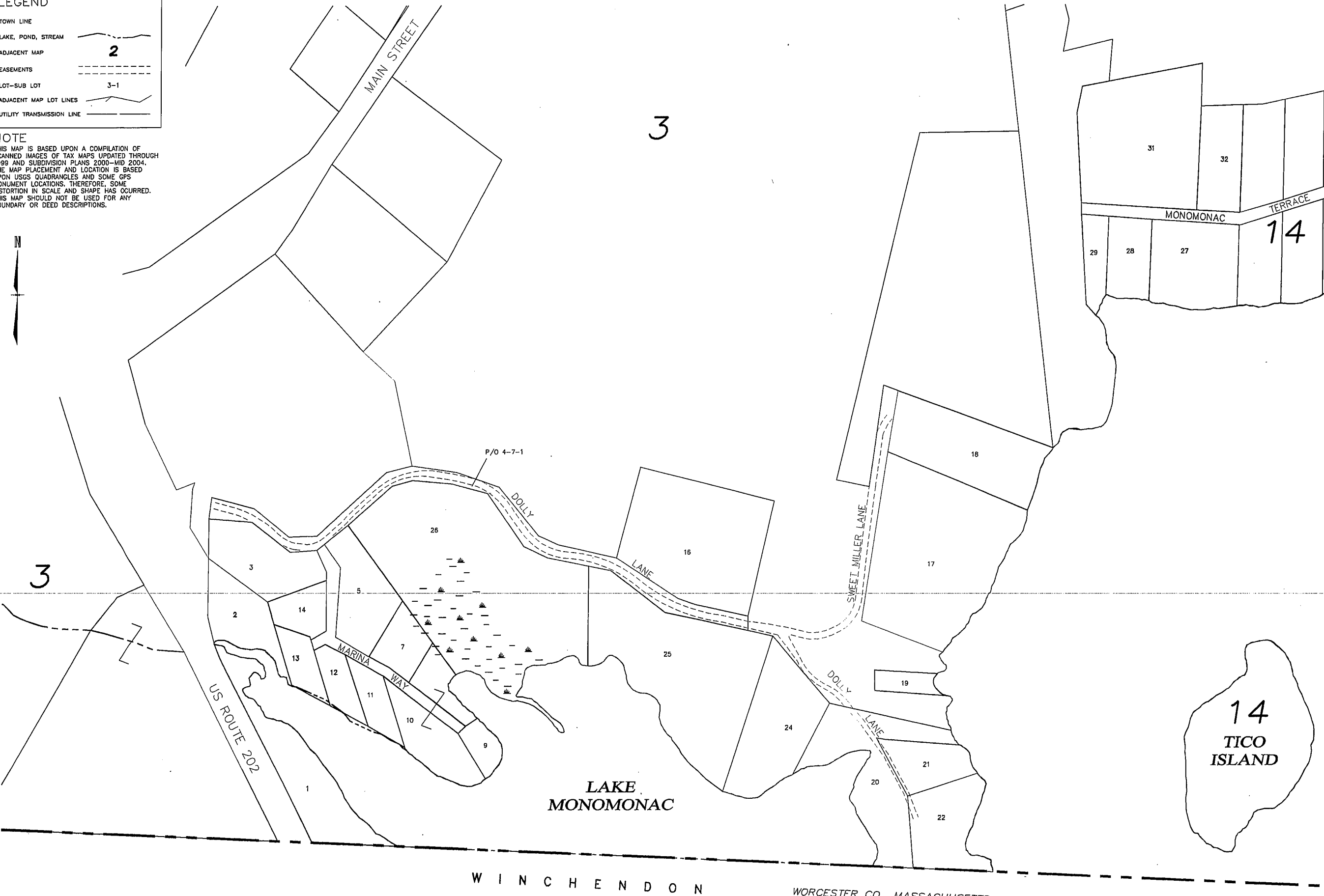


**LEGEND**

TOWN LINE	---
LAKE, POND, STREAM	~~~~~
ADJACENT MAP	<b>2</b>
EASEMENTS	---
LOT-SUB LOT	3-1
ADJACENT MAP LOT LINES	---
UTILITY TRANSMISSION LINE	---

**NOTE**  
 THIS MAP IS BASED UPON A COMPILATION OF  
 SCANNED IMAGES OF TAX MAPS UPDATED THROUGH  
 1999 AND SUBDIVISION PLANS 2000-MID 2004.  
 THE MAP PLACEMENT AND LOCATION IS BASED  
 UPON USGS QUADRANGLES AND SOME GPS  
 MONUMENT LOCATIONS, THEREFORE, SOME  
 DISTORTION IN SCALE AND SHAPE HAS OCCURRED.  
 THIS MAP SHOULD NOT BE USED FOR ANY  
 BOUNDARY OR DEED DESCRIPTIONS.



48 Constitution Drive  
 Bedford, NH 03110  
 Phone (603) 472-4488  
 Fax (603) 472-9747  
 www.tfm.com

Civil Engineers  
 Structural Engineers  
 Traffic Engineers  
 Land Surveyors  
 Land Planners  
 Landscape Architects

Bedford, NH • Manchester, NH • Salem, NH • Portsmouth, NH

**TOWN OF RINDGE**  
**CHESHIRE COUNTY**  
**NEW HAMPSHIRE**

DATED: August 2004  
 REVISED: April 2005  
 June 2005  
 CURRENT TO:  
 APRIL 1, 2009

SCALE: 1"=100'±  
 CADFILE: 82290 base

PROPERTY  
 MAP  
 13