
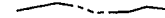




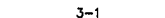
**LEGEND**


TOWN LINE 


LAKE, POND, STREAM 

ADJACENT MAP  2

EASEMENTS 

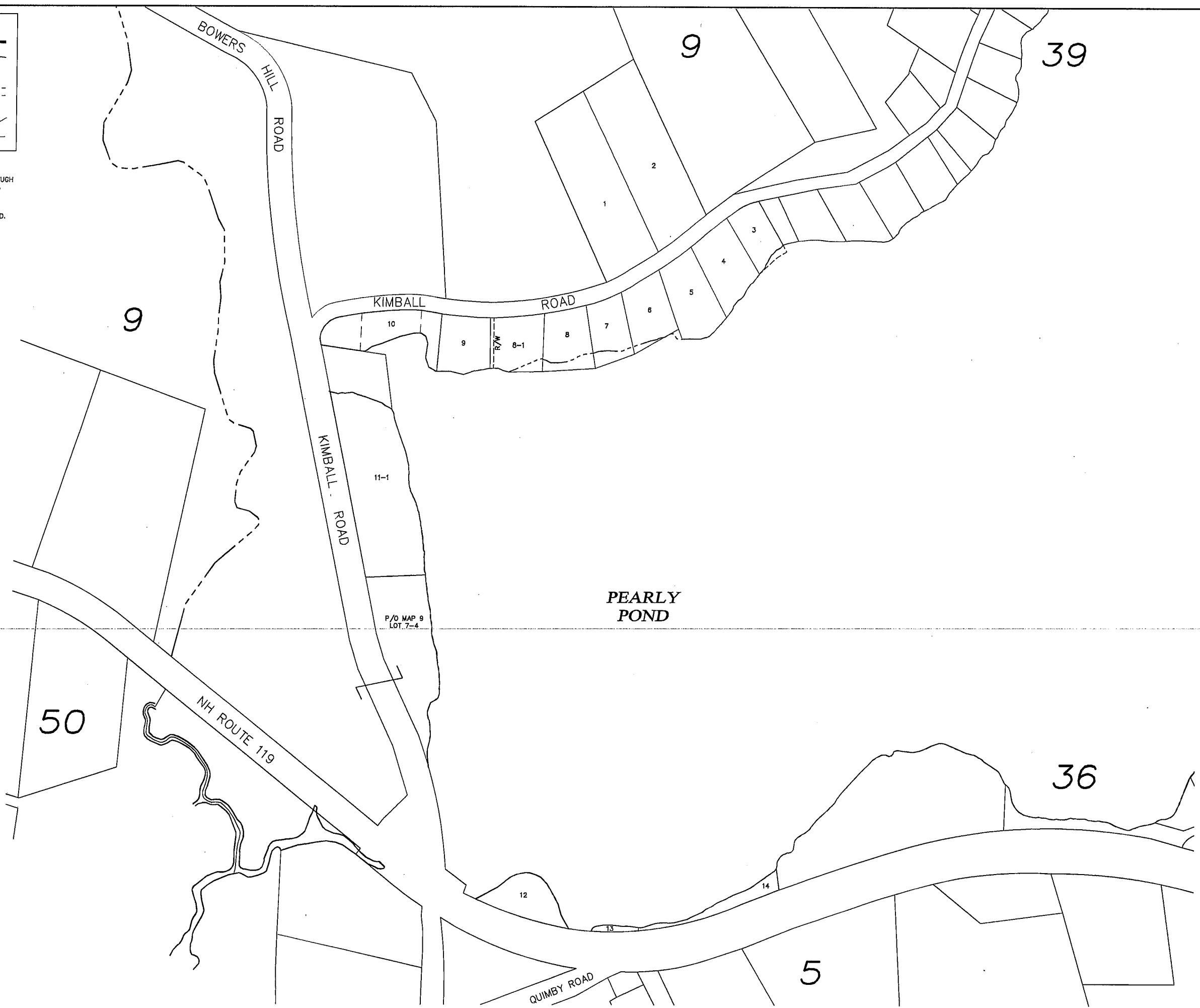
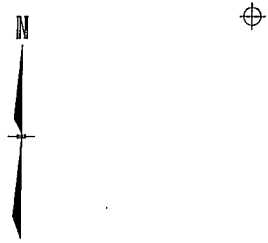
LOT-SUB LOT  3-1

ADJACENT MAP LOT LINES 

UTILITY TRANSMISSION LINE 

**NOTE**

THIS MAP IS BASED UPON A COMPILATION OF SCANNED IMAGES OF TAX MAPS UPDATED THROUGH 1999 AND SUBDIVISION PLANS 2000-MID 2004. THE MAP PLACEMENT AND LOCATION IS BASED UPON USGS QUADRANGLES AND SOME GPS MONUMENT LOCATIONS. THEREFORE, SOME DISTORTION IN SCALE AND SHAPE HAS OCCURRED. THIS MAP SHOULD NOT BE USED FOR ANY BOUNDARY OR DEED DESCRIPTIONS.



48 Constitution Drive  
Bedford, NH 03110  
Phone (603) 472-4488  
Fax (603) 472-9747  
www.tfm.com

Civil Engineers  
Structural Engineers  
Traffic Engineers  
Land Surveyors  
Land Planners  
Landscape Architects

Bedford, NH • Manchester, NH • Salem, NH • Portsmouth, NH



**TOWN OF RINDGE  
CHESHIRE COUNTY  
NEW HAMPSHIRE**

DATED: August 2004  
REVISED: April 2005  
June 2005  
CURRENT TO:  
APRIL 1, 2009

SCALE: 1"=100'±  
CADFILE: 82290 base

PROPERTY  
MAP  
35